

karBit nigtvl x

## ...GMJ sSahkmkatedrrbskm&a

- TMij n&atj ekhelgBKp&nGIT&Gsk&g&q&M1994 eTAdI ; 1/9 Ban;l andil &rG&amrk k&g&q&M 2004. R&eHl B&rPa&Kb&enTMij T&ajGs; I keTA[shrd&amrk n&gPa&K&ch&enbrimaNEdI enA&esssI ; I keTA&eGayshPa&BGWb .<sup>1</sup>
- ]sSahkm&enH&pl k&arg&edayp&al dI n&eyaC&it&ch&M 270>000 nak;. k&arg&ar&ab&an&E&fme&Tot RtU)anbeg&ileL&edayR&eoyal B]sSahkm&enH enAk&g&karI k&c&M&G&ah&ar n&igesv&ap&Sg<sup>2</sup>e&Tot dI km&k&r&er&ag&Rk n&igenAk&g&kar&enAk&ar&bn&pn&g&P&g&sm&3&ev&cx&B. es&H&E&T&ajGs; - 85 eTA 90 Pa&Kry &enkm&k&r&er&ag&Rk&k&at&edr K&M&S&pk&g<sup>2</sup> EdI manGay&ar&ab&I18 eTA 25 q&M&P
- s&M&ok&b&ak; t&M&age&Gay&es&H&E&T 80Pa&Kry &enpl&it&pl n&atj T&ajGs&r&bs&km&a n&g&pl ; k&arg&ar&ch&M 65Pa&Kry &enkm&M&aj&k&arg&ak&g&E&pk&pl it&km&ps&x&B .<sup>3</sup> ]sSahkm&k&at&edr t&M&ag [ 12 Pa&Kry&enpl&it&pl k&g&R&sk&r&bs&km&a .<sup>4</sup>
- man&er&ag&Rk&k&at&edr&ch&M&C&ag 200 enAk&g&R&e&T&sk&m&a. Pa&K&ch&man&T&it&aj&enAk&g&ra&C&F&an&P&B&J n&g&x&en&A&C&it&k&B&g&E&pk&R&B&H&sh&nu . &er&ag&RkPa&K&ch k&an&k&ab&eday&br&e&T&S EdI Pa&K&ch Ca&n&C&at&ch&m&k&B&G&as&b&a .

## s&masPa&B&ens&ma&CkPa&B GMAC<sup>5</sup>

	°&ens&masPa&B&sr&b
hgkg	29.08
&et&var;	21.94
ch	11.73
km&a	7.14
k&tr:	6.63
m&a&L&slu	4.59
shrd&amrk	4.59
sg&bd	4.08
c&Rk&P&B&G&e&K&S	3.06
m&ka&v	3.06
R&e&T&sd&e&T&e&Tot	4.1

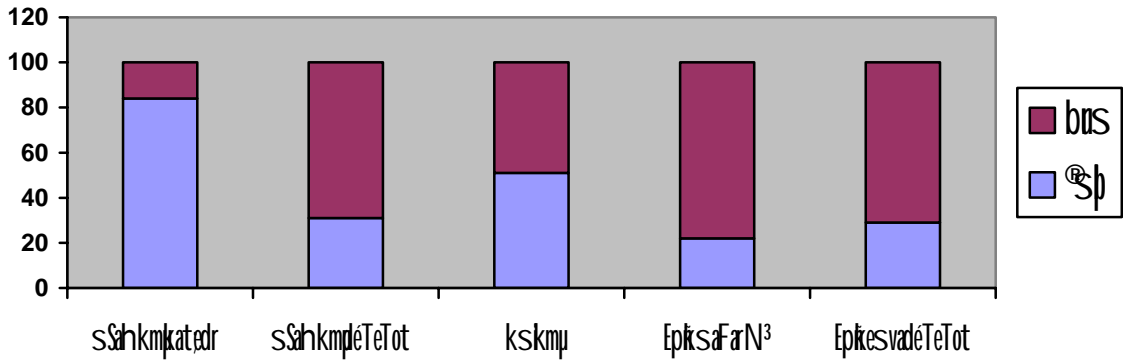
- enAxN<sup>3</sup>EdI RbB<sup>3</sup>Ca)anCYkm&a edm,cabepndNrkarrbsxüenAkü] sSahkm<sup>2</sup> katedrBPBel ak GkTij )anngkBgbehgkarBAtij rbsxübnpmg<sup>2</sup> eTael mxThij sM ok bBaknana EdI minsteRkankllarbsshrd&amrk. Thij nabtj EpksM okbBakeTakan; shP&BGW k)anekheLhpgEdr küry<sup>3</sup>eBI Brrbq&g&akayenH. <sup>6</sup>
- brimaNI kd&srbskm&a eTaeGayshrd&amrk )anekiteLgCadMgedaysarEtkeC&Bm eBogBaNCkmpyküq&M1999 EdI küenard&P)al shrd&amrk)anpl rghndI ; k&T&D kargarl ¥enAküvis&] sSahkmkatedr edayektombMgThij nabM myEpkrbsxüCaBess sMbsM okbBakEdI )anpl itenAküRbeTskm&a. shrd&amrkpl nukllanabM rbsxü chM 9° dl ;km&a küq&M002 12° küq&M003 nig 14° enAküq&M004. <sup>7</sup>

... G&esd&ic©ngkM abI kmpbskm&a

- RbCaCnkm&a manchM Cag 13I anak; <sup>8</sup> yagehacNaskB&kkNpl énRbCaCnenH sItenA eRkanGayu18q&MdeCh mnsSv&zekg<sup>2</sup>Ca&chnngcM eTAKüjkm&ajkargar enAküry<sup>3</sup>eBI my TsvtSrxagmxenH. <sup>9</sup>
- GRtaGkr&km&nsSeBj v& KW1 PaKry<sup>10</sup> edayküenahGkr&km&span 41 PaKry. <sup>11</sup>
- vis&kskmppl kargarCag 70PaKry énkM abI kmp kargarEdI pl R)akQü manchM t&t&. ]sSahkm&nppl kargarEt 10& PaKrybaN&H ehlyEpkesvakmpmanchM 19& PaKry énkM abI kargar. <sup>12</sup>
- R)ak&M Rocab&km&nsSm&kKVB21 dil ar&amrk kümyq&M<sup>13</sup>
- RspanchM Pa&RchenAkü] sSahkmkatedrenH EdI xsK&Cax&eTAngkarcl rind&ct&erbs; BkekenA küEpkepSg<sup>2</sup>eToteRkABkskmp

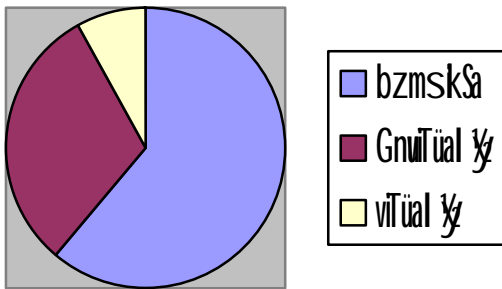
cINkénkargarmanR)akQü rbsRsp

	]sSahkmkatedr	]sSahkmpl&eT&Tot	kskmpu	Epks&FarN <sup>3</sup>	Epkesva déTeTot
% Rsp	84	31	51	22	29
% bus	16	69	49	78	71



**klit Gbr/bus, Sp d l e f kare n k u j ] sSahkmkatedr<sup>15</sup>**

	bzmskSa	Gnuüüal ½	viüüal ½
%	61	31	8



**...Gbr kare f kare garen AeragcRk**

- eragcRk Taj Lay Rt Ut Me Gay bg R) ak, Qü Gb, brmarbskm & cchm 45 dül ar Gæmrk kÿmÿ Ex. kmkrCaerchrkR) ak, Qü ) ankanEtechEfméTot enAeBI Thp l rbsBkekekheLg. R) ak, Qü CanFümén] sSahkmknKW 61 dül ar kÿmÿEx nigkÿeBI fpenH) anekh eLgeTAdI ; 70 dül ar Gæmrk eday qüBazBp l itPaBEdI ) anekhLg. <sup>16</sup> CakareBoboFob R) akobvtSrCanFümstl bmrnpaCkarkm&akV28 dül ar Gæmrk kÿmÿEx. <sup>17</sup> CagmÿPaKbën RbCaCnkmeTatdG;- 36PaKry-rsenAekambnténPaBRkRk. <sup>18</sup> enATCnbT EdI CakEngEdI kmkrPaKerchcacej R) ak, NU CanFümstl bRkSaTajmU KW 40 dül ar Gæmrk kÿmÿEx. <sup>19</sup>
- emagefkar p kare n k u j eragcRk katedr KW Bemagkÿmÿéf% é f kÿmÿs) pñ. bñpkmkrCa erche f kare l semag. emagefkar CanFümKW 0 emagkÿmÿéf% <sup>20</sup> kare f kare l semageday bgMigevne f kare y th s RtU) anekraykar NeGay dng faCabBa enAküeragcRkmÿcchm. <sup>21</sup>

Cakare Rbobe Fob kmkre Fikaren Akög Eptikk skm Garsp e Fikares Et 18 emag kýmly éfñ -buse Fikar 14 emag; en Akög rdw ssa nig 14 emag kýmly éfñ -10 eTA 12 emag sñ bbus; kög rdw) aji. <sup>22</sup>

- kmkreragc Rk Pa Kerch ep R) ake Tap BI 30 eTA 50 Pa Kry én R) ak Exrbs Bkek -Rb Eh I 10 eTA 30 dñ ar Gæmrk. <sup>23</sup>
- Gaye Fikar Gb, brmae Rkanc, ab rbs km Gæ KW 15 qām bñ pragc Rk Pa Kerch) ank Mlt Gayu Gb, brma KW 18 qām <sup>24</sup> BI km pday bgñ min Rt U) ane Kraykar N f a Cab Bañ y en Akög eragc Rk kated r rbs km Gæ T. eTA b Cayag Nak day k mkr N m y ch M Ed I kmkre Rkan Gay bñ bñ Rt U) ane krke Xij en Akög eragc Rk nana Ed I bñ k m g mál min Rt U) ane k tñ e Gay pñ ; Pst jag G B Gayu <sup>25</sup> bñ pñ hñ kmare Fikaren Akög Rb e T skm Gæ e K Gace Xij manek chen Akög es dñ eñ herobry Ed I kügena Bkek I kc M Gahar e Fikaren At ane Pa Cny dæn be Fta Gk bñ en At ampñ nig Cy Rk Sar rbs Bkek en Akög kargavay f j karp I it Gññ nig kargark skmp
- R) ak Qñ e Rk ankñ Gb, brma Rt U) ane Kraykar Ne Gay dñ f a Cab Bañ y en Akög eragc Rk kated r xñ. <sup>26</sup>
- c, ab km Gæ Fana d I sñ k j k ar begñ sh CB nig e Fikar c rcañ kæn Ak Eng e Fikar. eragc Rk Pa kerch man begñ Cash CB bñ k ar c rcañ kæn en A e t sñ en Akög dññ kkal dññ gen Ae Ly. ] b, tñ tñ Gññ hñ Sa Fññ R) o qññ Gñ dñ kñ sh CB ) ane k t e L y eTA b Camñ eh tñ b Bañ en Hen A e t min Tan; Rt U) ane K dñ c, as; I ask e day .

et c, ab f c g Gñ Gñ kñ?

c, ab k argarbs km Gæ Fana <sup>3</sup>

- R) ak Qñ Gb, brma 45 dñ ar Gæmrk kýmly Ex sññ ] sññ km kated r nig Es, ke Cg bññ R) ak r gññ; 5 dñ ar kýmly Ex sññ bññ rbs Bkek ral éfñ
- e Fikar 48 emag kýmly s) ðñ nig 8 emag kýmly éfñ 1 s) ðñ e Fikar 6 éfñ kargarel s emag min Rt U e I s BI 2 emag kýmly éfñ
- GRta emag bññ 150 Pa Kry sññ emag bññ Fmñ ta 200 Pa Kry sññ e Fikaren A éfñ G a t i t u éfñ Nüsa Far N<sup>3</sup> nig sññ e Fikare BI yb;
- Qbsññ k R) o qññ 18 éfñ kýmly qām nig Qbsññ k éfñ Nüsa Far N<sup>3</sup> cññ 25 éfñ bññ éfñ Qbsññ k Bess cññ 7 éfñ (Gac Qb) an sññ e hñ tñ I Rk Sar



- 6 r)aykarN\_ADB TBV/215
- 7 Sandra Polaski, *km&asilenel púffnyeTAnkark I III asesde: @gkarbegitkargar*, Carnegie Papers No. 51, Extul a qá004
- 8 r)aykarN\_ADB TBV/25
- 9 UNDP, *maRk&sd&en&katbn&P&BR&ken&km&aqá004* TBV/256
- 10 R&sg&on&ar km&ar)aykarN&kal ed&AG&P&D&An&R&cab&hs&vt&sr&km&aqá003
- 11 r)aykarN\_ADB TBV/26
- 12 r)aykarN&kal ed&AG&P&D&An&R&cab&hs&vt&sr TBV/28
- 13 r)aykarN&G&P&D&An&Fn&F&am&ns&S&rs;UNDP TBV/2186
- 14 r)aykarN\_ADB TBV/255
- 15 r)aykarN\_ADB TBV/259
- 16 Ros Harvey, “K&mag&vis&y&k&atedr&km&ca<sup>3</sup> es&ck&se&gb” kar&bg&aj tank&mp&FI powerpoint, K&on&kal b&re&ca
- 17 r)aykarN&R&cab&et&sr&rs;IMF el X 03/59, ero&br&aben&Ak&g Polaski, TBV/26
- 18 KN<sup>3</sup>km&kar Ten&am&K&g&Á E&on&T&h&ag&sg&h&en&G&ag&Ten&am&K&g&Á&am (Social Atlas of the Lower Mekong Basin) Exm&ha qá003 TBV/279
- 19 r)aykarN&R&cab&et&sr&rs;IMF 3/59, ero&br&aben&Ak&g Polaski, TBV/211
- 20 r)aykarN\_ADB TBV/258
- 21 K&mag&vis&y&k&atedr ILO r)aykarN&S&My&kel kTR)ad&h s&P&il k&ar&P&R&g&aren&Ak&g&vis&y&k&atedr&rs&km&ca&Ex&km&á qá004 TBV/25
- 22 r)aykarN\_ADB TBV/27
- 23 r)aykarN\_ADB TBV/260
- 24 c, ab&kar&g&ar&km&ca&ma&R&ta 117 c&g&R&k&gen&Ak&g&BR&g&ages&ove&P&Ac, ab&kar&g&ar&km&ca&rs&K&mag&vis&y&k&atedr ILO TBV/26
- 25 K&mag&vis&y&k&atedr ILO r)aykarN&S&My&kel kTR)ad&h s&P&il k&ar&P&R&g&aren&Ak&g&vis&y&k&atedr&rs&km&ca&Ex&mk&ra qá005 TBV/29
- 26 r)aykarN&S&My&kel kTR)ad&h ILO TBV/215-17
- 27 r)aykarN&S&My&kel kTR)ad&h ILO TBV/25